

TB ORD FE3

WAR DEPARTMENT TECHNICAL BULLETIN

TRAILER 1/4-TON PAYLOAD, 2-WHEEL, CARGO, 1942-43; TRUCK, 3/4-TON, 4 x 4 (DODGE T214) (MODEL WC-51 WEAPON CARRIER AND WC-52 WEAPON CARRIER WITH WINCH): SAFETY CHAIN INSTALLATION

Ref: TM 10-1230: Trailer, 1/4-ton, Payload, 2-wheel, Cargo (Willys)
(Model MBT, 1942-43), 1 Oct 42

TM 10-1281: Trailer, 1/4-ton, Payload, 2-wheel, Cargo (American
Bantam) (Model T-3, 1942-43), 15 May 43

TM 9-808: Truck, 3/4-ton, 4 x 4 (Dodge), 31 Jan 44

War Department, Washington 25, D. C., 14 April 1944

1. The safety chains on the subject trailer are too short for use with 3/4-ton, 4 x 4 (Dodge T214) weapon carrier, because of the relative location of the pintle hook and the safety chain eye bolts.

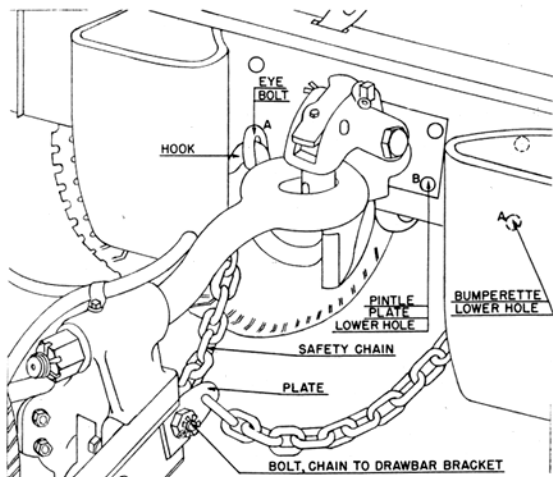
2. To remedy this condition, replace safety chain *WO-A6392 and bracket bolt *WO-A6515 with new chain and bolt as indicated below. NOTE: *New parts can be requisitioned through regular supply channels. These parts are the same as used with 1-ton payload 2-wheel cargo trailer.*

Name	Old Parts to be Removed and Returned to Stock		New Parts Required	
	Pc.Mk.	Qty.	Pc.Mk.	Qty.
Chain, safety, with hook and plate	*WO-A6392	2	*WO-A14130 **8-C-1000	2
Bolt, chain to draw bar bracket	*WO-A6515	1	*WO-A-14552 **43-B-21140	1

3. If the new parts are not available, the above condition can be overcome as follows (fig. 1).

a. Lengthen both chains WO-A6392 by adding three links to each chain.

*WO—Willys-Overland Motors, Inc., piece mark
**Federal Stock Number



RA PD 328501

FIGURE 1—SAFETY CHAIN ATTACHMENT OF 1/4-TON TRAILER TO 1/4-TON TRUCK

b. Remove two safety chain eye bolts from lower holes of rear bumperettes (A, fig. 1).

c. Remove two lower bolts from pintle hook attaching plate (B, fig. 1).

d. Reinstall two eye bolts in lower holes of pintle hook plate (B, fig. 1), and reinstall two plain bolts in lower holes of bumperettes (A, fig. 1).

4. Insert both safety chain hooks in eye bolts from pintle hook side so that points of safety chain hooks will be on bumperette side of eye bolts to prevent unhooking of eye bolt while traveling (A, fig. 1).

[A.G. 300.5 (14 Apr 44)]

By order of the Secretary of War:

G. C. MARSHALL,
Chief of Staff.

OFFICIAL:

J. A. ULIO,

Major General,

The Adjutant General.

WAR DEPARTMENT TECHNICAL BULLETIN

Distribution: As prescribed in Par. 9 a, FM 21-6; B 1 (2); IB 2 (2); R 1, 7 (2); IBn 3, 4, 10 (2); Bn 5-9, 11, 17-19, 44, 55 (2); IC 2, 7 (2); C 3-6, 8-11, 17-19, 44, 55 (2); Ord Decentralized Sub-Offices (3); PE (Ord Off) (5); Holding & Reconsignment Points (5); Ord Dist Offices (5); Ord Regional Offices (3); Ord Dist Branch Offices (3); Ord Establishments (5); Ord Tank Depots (3).

IB: T/O 2-10 Cav Brig (Horse);

IBn 3: T/O & E 3-25 Cml Bn Mtz;

IBn 4: T/O 4-45, CA Bn (Ry); 4-275 AB AA Bn; T/O & E 4-155 CA Bn (155-mm gun);

IBn 10: T/O 10-335 Mtn Qm Bn;

IC 2: T/O 2-2 Hq Tr, Cav Div; 2-10-1, Hq & Hq Tr Cav Brig (Horse); T/O & E 2-22 Hq & Hq Tr, Cav Gp Mecz;

IC 7: T/O 7-52, Hq & Hq Co Glider Inf Regt; 7-53, Serv Co Glider Inf Regt; 7-56 Hq & Hq Glider Inf Bn; 7-57 Glider Co, Glider Inf Regt; 7-96, Hq & Hq & Serv Co Inf Bn Sep; 7-132 Hq & Hq Co, Mtn Inf Regt; 7-133 Serv Co, Mtn Inf Regt; 7-417 Adrm Comb Co, AB Sec Bn; T/O & E 7-2 Hq Co, Inf Div; 7-12 Hq & Hq Co, Inf Regt; 7-13 Sv Co Inf Regt; 7-14 Cannon Co, Inf Regt; 7-16 Hq & Hq Co, Bn Inf; 7-17 Inf Rifle Co; 7-18 Inf Hv Wpns Co; 7-19 AT Co, Inf (57-mm gun); 7-26, Hq & Hq Co Armd Inf Bn; 7-29 Sv Co, Armd Inf Bn.